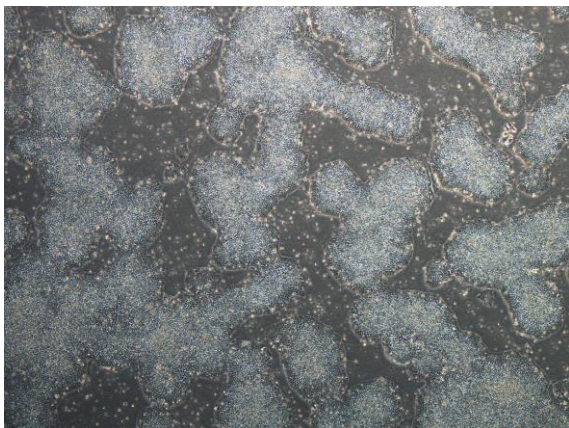
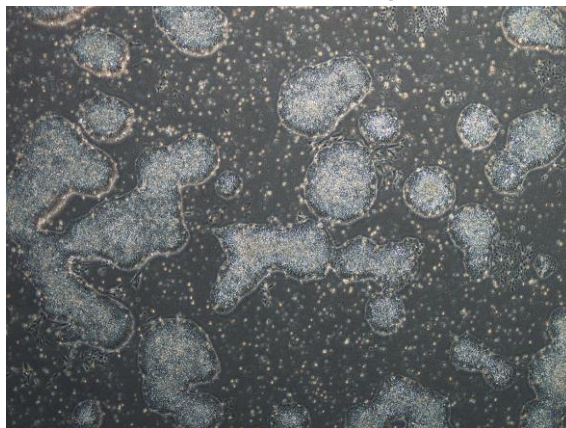


【 CiRA-j-1115 】 Morphology of iPSC colonies

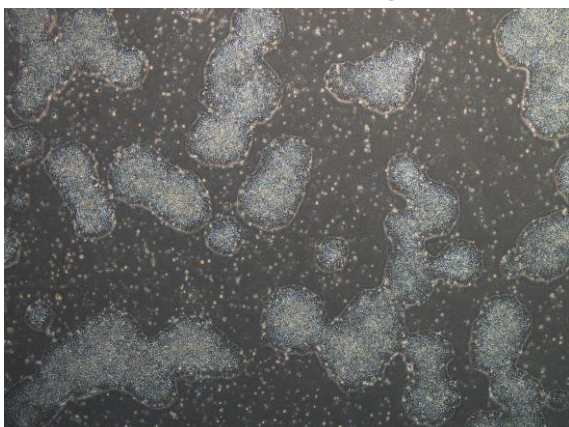
CiRA-j-1115-A: passage-3



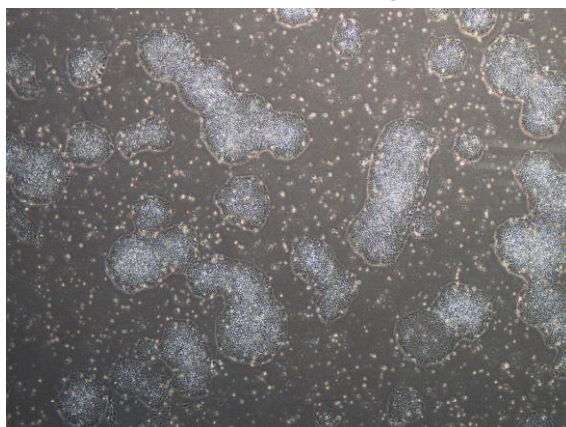
CiRA-j-1115-B: passage-3



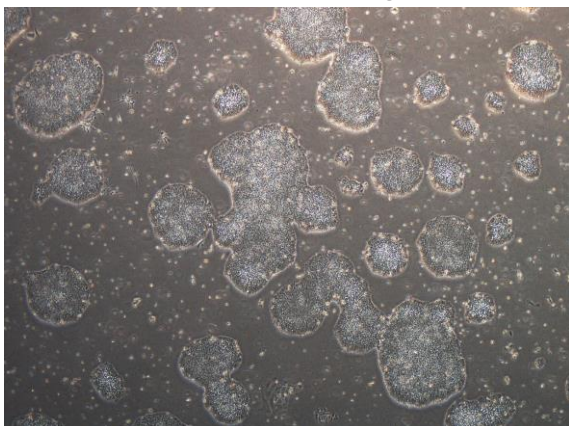
CiRA-j-1115-C: passage-3



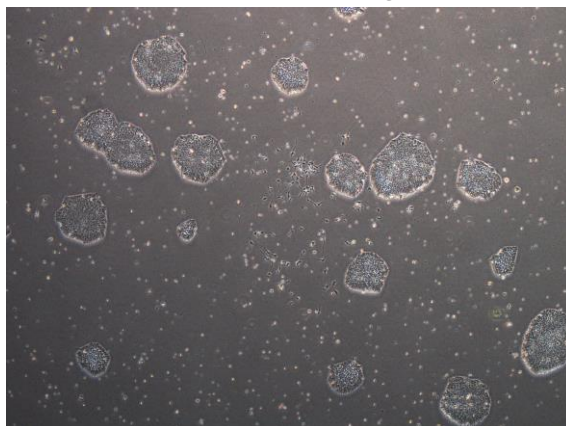
CiRA-j-1115-D: passage-3



CiRA-j-1115-E: passage-3



CiRA-j-1115-F: passage-3



(All images were captured at 4x magnification)